

# Unit 3

## HAIR TREATMENTS

In this unit you will

- ▶ learn and practice the vocabulary for products and tools for different hair treatments
- ▶ learn and practice phrases for different treatments and their applications
- ▶ practice making recommendations to clients



## Part 1: Hair Colouring Products and Accessories

### 1a Class Discussion

- ▶ Have you ever coloured anyone's hair?
- ▶ Have you ever had your hair coloured?
- ▶ What products, tools and accessories do you need to dye someone's hair?



### 1b Check the meaning

Use your glossary to check the meanings of the following

permanent  
wipes

semi permanent  
level lift

temporary  
shade apply

bleach  
remove

lightener  
remover

developer  
stain

### 1c Match

Match the following **hair colouring salon supplies** categories with the products (there are 2 products under one of the categories).

**CATEGORIES:** Permanent Colour    Peroxide & Developer    Semi Permanent Colour  
Bleach & Lighteners    Colour Remover    Colour Accessories    Shade Charts

<p>1. </p> <p>A little dispenser for 100m rolls of foil.</p>	<p>2. </p> <p>These wipes safely &amp; gently remove hair colour &amp; colour staining from the skin. Contains 100 wipes.</p>	<p>3. </p> <p>A white powder bleach that can achieve up to 7 levels of lift.</p>	<p>4. </p> <p>The chart helps clients to choose the right colour.</p>
<p>5. </p> <p>Permanent cream hair colour for totally safe, glossy, natural shades</p>	<p>6. </p> <p>This coloured styling foam can temporarily colour grey hair</p>	<p>7. </p> <p>Tinting bowl and brush for mixing and applying hair dye</p>	<p>8. </p> <p>This developer comes in 4 strengths and ensures easy mixing, correct results and long lasting colour</p>

adapted from <http://www.salonconnection.co.uk/products/19/colour-accessories>

### 1d Answer the questions

Answer the following questions about the products and accessories.

1. What is the maximum length of foil the dispenser can take?
2. What do you use to mix the hair colour and the developer?
3. What do you use to apply the dye to hair?
4. How can a client decide on the colour for her hair?
5. Which products and accessories would you use if a client wanted highlights?
6. Which product would you use if the hair dye stained a client's skin?
7. Which product would you use if you want to change your hair colour only for a short time?



## 1e Class Discussion

- ▶ What is your natural hair colour? (you can refer to the colours below)
- ▶ What hair colours are popular this year?

## 1f Check the meaning

Use your glossary to check the meanings of the following words.

**depth warm cool neutral pigment ash pearl mahogany**

### The International Colour Chart

The International Colour Chart (ICC) is a numbering system used worldwide to classify hair colour. The ICC number on a hair colour product has two parts - depth and tone. For example, in colour number 10.21, 10 is for depth and 21 is for tone. Some colours only have depth and not tone.

#### Colour Depth

Depth is given a whole number from 1 to 10, where 1 is the darkest hair colour (black) and 10 is the lightest (lightest blonde). Some manufacturers also use 11 and 12 for the blondest of the blonde. Below are the ten natural hair colours or depths with the ICC number.



#### Colour Tone

Tone refers to the colours we see in the hair and are classed as warm, neutral or cool.

- Warm tones have reds, yellow and orange in them, and are in colours such as strawberry blonde, copper and chestnut brown.
- Neutral tones have a balance of warm and cool pigments in them.
- Cool tones have blues and greens in them, and are often called ash tones.

ICC Number	Tone	Cool or Warm
.1	Blue Ash	Cool
.2	Mauve Ash	Cool
.3	Gold	Warm
.4	Copper	Warm
.5	Mahogany	Neutral
.6	Red	Warm
.7	Khaki	Cool
.8	Pearl Ash	Cool
.9	Soft Ash	Cool

## 1g Match

Read the text on The International Colour Chart and match the following hair colours with their names and numbers

- 1.1 dark gold blonde
- 6.65 light chocolate brown
- 9.4 white ash blonde
- 5.6 copper blonde
- 10.2 blue black

	colour	name	number
A			
B			
C			
D			
E			

## 1h True or False

Mark the following statements as True (T) or False (F) according to the above text.

- 1. The highest the first number on a hair colour is the darkest the colour is.
- 2. In colour number 4-9, 9 is the colour tone.
- 3. 4-9 is a cool brown tone.
- 4. 9-3 is a neutral tone.
- 5. Chestnut brown is a cool tone.
- 6. Blue black colour is a cool tone.
- 7. Mahogany tone has a balance of warm and cool pigments in it.

## 1i Homework

Check different hair dye products in a supermarket and compare the colour numbers on them. Is the numbering standard or do different companies use slightly different numbers?

## Part 2: Hair Colour and Skin Tone

### 2a Class Discussion

▶ How should you decide on the right hair colour for a client?



### 2b Discussing skin tones

1. Label the women in the picture as **fair, medium, olive, dark** (in order of increasing darkness).
2. Which of the 4 skin tones match you the best?
3. Find a classmate who matches each skin tone in the picture.

### 2c Study the meaning

Check the following words in your glossary and then use them to fill in the gaps in the sentences.

surface veins wrist jewelry silver gold amber hazel tan

1. I don't wear any ..... (1) in summer as it is too hot.
2. .... (2) is much more expensive than ..... (3).
3. She has very light skin and doesn't ..... (4) easily.
4. .... (5) is a colour between yellow and orange.
5. She has beautiful ..... (6) eyes.
6. She fell and broke her right ..... (7).
7. As people get old, you can see the ..... (8) on the ..... (9) of the skin

### 2d Test yourself

Read the following text, and fill in the table with information from the text, then answer the questions

#### How to find your undertone

Your skin's surface tone is the color you'd describe yourself as having (fair, medium, olive, dark, etc.) Your skin's undertone is the color underneath the surface. You can have the same skin color as someone, but a different undertone. Below is a simple test to find out what skin undertone you have.

#### 1. Check Your Veins

Look at the veins on the inside of your wrist. Are they blue or green? If they look more blue, you have cool undertones. If the veins look greenish, you're warm (your veins aren't actually green—they look green because you're seeing them through yellow-toned skin)

#### 2. The Jewelry Test

Think about whether you look better in silver or gold jewelry (not which you like more, but which actually makes you look better) Typically, girls with cool undertones look better in silver and platinum metals, and warm-toned women look better in gold.

#### 3. Eye and Hair Color.

Your natural eye and hair colors can help figure out your undertone. In general, cool people have eyes that are blue, gray, or green and have blond, brown, or black hair with blue, silver, violet and ash undertones. Warm-toned women usually have brown, amber, or hazel eyes with strawberry blond, red, brown, or black hair. Their hair tends to have gold, red, orange, or yellow undertones.

#### 5. The Sun's Effects

When you're out in the sun, does your skin turn a golden-brown, or does it burn and turn pink first? If you fit into the first category, you're warm-toned. Cool tones tend to burn (fair-skinned cool girls will simply burn, while medium-skinned cool-toned girls will burn then tan.)



	Cool	Warm
Veins		
Jewelry		
Eye Colour		
Natural Hair Colour		
Sun's Effects		

1. What is your undertone?
2. How about your classmates? Find out who is
  - fair-skinned cool-toned
  - fair-skinned warm-toned
  - medium-skinned cool-toned
  - medium-skinned warm-toned
  - olive-skinned cool-toned
  - olive-skinned warm-toned
  - dark skinned cool-toned
  - dark skinned warm-toned

## 2e Match people and hair colours

Read the following text and find words and phrases which mean

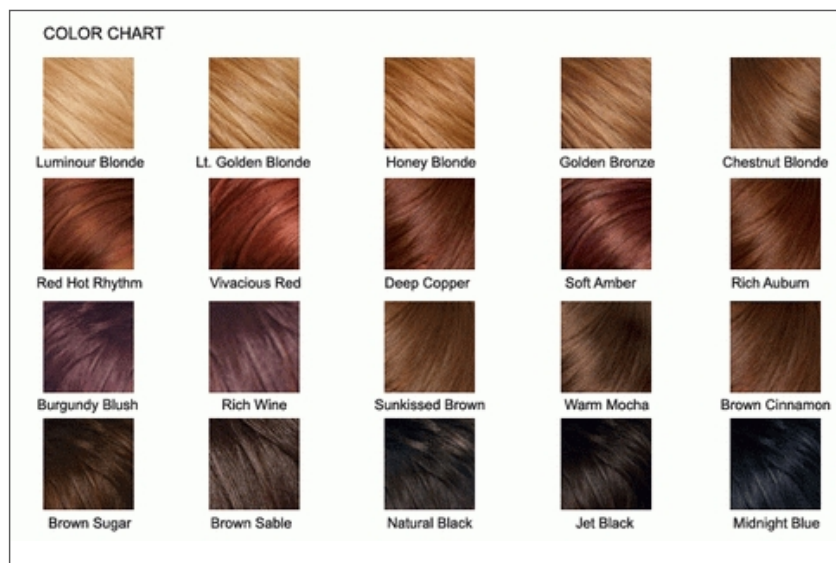
a) choose:

b) not choose:

## 2f Match people and hair colours

Read the text again and decide which hair colours from the chart match different classmates.

- **Fair skin:** Warm-skinned people should choose colors such as golden blond, auburn, and rich, deep browns. Those with cooler skin tones can opt for beige and ash blonds, cooler chocolate browns, and some cooler dark shades of red, such as burgundy. Those with extremely fair skin should avoid black as this will make them look paler.
- **Medium skin:** Those with cool skin should stick to ash shades. Those with warm skin should go for golden and copper tones such as golden brown, chocolate brown, strawberry blonde, auburn, or golden blonde.
- **Olive skin:** Dark colors are generally best for anyone with olive skin, regardless of the warmth or coolness of the undertones. Black, dark brown, medium brown or darker blonde shades can work well with olive skin.
- **Dark skin tones:** If cool, stay away from red, bronze and gold in your hair. You should prefer black (shiny), ash brown and platinum blonde. If warm, avoid white or jet-black hair, and consider red highlights, a warm gold, auburn, chocolate or deep, rich brown colors.



Your classmates 

www.firsthairstyle.com

## 2g Match

Complete the following conversation between a hairdresser (H) and a client (C).

colour chart      medium skin tone      warm undertone  
brown shades      brown cinnamon      mocha      shade

H: So have you decided on what ..... (1) you want?  
 C: I'm not sure. I've been blonde for a long time. I want to go darker. What do you think?  
 H: Well, you have nice ..... (2) . Let me see your wrists... You seem to have a ..... (3) .  
 C: So?  
 H: What do you think about ..... (4)?  
 C: I like light brown shades.  
 H: OK. Let's look at this ..... (5) . See this warm ..... (6) and ..... (7), those colours will suit your skin tone.

## 2h Write a dialogue

Now work with your partner and write your own dialogue, then act it out.

## Part 3 Colouring Hair

### 3a Class Discussion

- ▶ What are the steps in colouring hair?
- ▶ What kind of preparations should the hairdresser do?
- ▶ What should the client do or not do before the treatment?



### 3b Check the meaning

Use your glossary to check the meanings of the following words and phrases.

all-over colour    gloves    strand    mix    prevent    colour stains    tangle free  
 layer    hairline    pour    squeeze    separate    sections    rinse

### 3c Match

The following text talks about steps of colouring hair in a salon. Read the text and match the steps with the pictures.

#### Applying All-Over Colour

##### You Need

hair dye , developer, plastic gloves, tinting bowl and brush, gown, petroleum jelly (vaseline)

##### Instructions

- 1) Perform a strand and allergy test 48 hours before colouring the client's hair. Ask the client not to wash her hair before coming to the salon for colouring.
- 2) Protect the clothes and skin from hair colour stains. Put a gown over the client.
- 3) To prepare the client's hair for color, you should comb it and make sure that it's tangle free.
- 4) Apply a thin layer of petroleum jelly to the hairline and ears of the client. This prevents the hair dye from staining these areas.
- 5) Use plastic gloves. Pour the cream developer into a bowl, squeeze the hair dye solution into the cream developer.
- 6) Mix the cream developer and the hair dye well.
- 7) Separate the hair into sections.
- 8) Apply the all-over colour. Begin at the roots. Apply the dye to the strands of hair using the brush. Spread the dye through the hair with the gloves, making sure that the hair is completely covered.
- 9) Leave the dye in for 30 minutes (extra 10 minutes for grey hair). Rinse completely with cold water. Style. Ask the client not to wash her hair with a shampoo for at least 48 hours.

Adapted from <http://www.ehow.com/how\_2215589\_prepare-hair-color.html>



### 3d Match

Answer the following questions according to the information in the text.

1. When should you apply a strand and allergy test?
2. How can you protect the client's clothing from colour staining?
3. How can you protect her skin from staining?
4. How can you protect your hands while colouring hair?
5. What are the two things you should do to the client's hair before you start colouring?
6. How do you apply the dye?
7. How long should the dye stay in the hair before you wash it out?
8. When can a client wash her hair with a shampoo after the colouring?

## What's the difference between highlights and lowlights?

Highlights are light colours applied to dark hair, while lowlights are dark colours applied to lighter hair.



### 3e Class Discussion

- ▶ Which woman in the above three photos has highlights, which one has lowlights, and which one has both?
- ▶ How popular are highlights and lowlights? Who usually prefers them?
- ▶ Have you ever had highlights or lowlights? Do you like them?

### 3f Discuss with your partner

- ▶ What kind of a hair treatment do you think the woman in the Before and After photographs receive?
- ▶ How many different shades do you think she has in her hair after the treatment?



### 3g Match

Match the highlighted words in the following text with their Turkish equivalents below.

ön orta      üçgen bölümler      hapsetmek      başın tepesi      saçın geri kalanı  
 çarpıcı görüntü      boya bekleme süresi      arka arkaya dilimler      geriye kalan

### Step-by-step guide to creating this stunning look

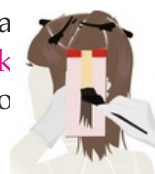
#### Formulas:

A = Koleston Perfect 10/04 (lightest natural red blonde); B = Koleston Perfect 9/04 (very light natural red blonde); C = Koleston Perfect 8/38 (light gold pearl blonde); D = Blondor Multi Blonde Powder/granules + Welloxon Perfect 6%; E = Koleston Perfect 7/7 (medium brunette blonde) + Koleston Perfect Special Mix 0/43 + Welloxon Perfect 6%

**Step 1:** Section five **triangular panels** on **top of the head**.



**Step 2:** Apply formula A using **back-to-back slices** in the back two triangular panels.



**Step 3:** Apply formula B and C using back-to-back slices in the **front centre triangle panel**.



**Step 4:** Apply formula D in back-to-back slices in the **remaining** two triangular panels.



**Step 5:** Finally apply formula E throughout the **rest of the hair**.



**Step 6:** After **development time**, rinse off the product and apply Blondor Seal and Care to **seal in** the colour and give a shine.



## Part 4 Hair Extensions

### 4a Class Discussion

- ▶ Which clients usually want hair extensions?
- ▶ What are the hair extensions made of?
- ▶ What different hair extension methods do you know?
- ▶ Do you like hair extensions?



### 4b Check the meaning

Match the following Turkish phrases with their **highlighted equivalents** in the text.

kendin yap (Do It Yourself)  
hafif düz başlı pense

güvenli sıkıştırma  
kaynak aleti

önceden yapıştırılmış saç uzantıları  
atkı saç uzantıları

mikro halkalar  
muhteşem farklı renklerde

çekme iğnesi



**PRE-BONDED CUTICLE HAIR**

These **pre-bonded hair extensions** come in packs of 25.



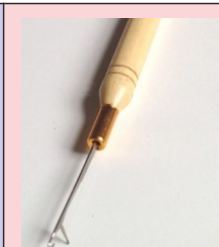
**CLIP-IN HAIR WEFT**

These **DIY clip-in hair weft extensions** come in a **range of fantastic colours** and they easily clip into your hair.



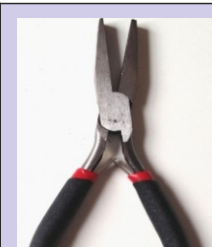
**MICRO RINGS**

Silicone lined **micro-rings** for hair extensions.



**PULLING NEEDLE**

This **light weight wooden pulling needle** is used in the **fitting and application** of micro ring hair extensions.



**PLIERS**

The **flat head plier** ensures **secure fastening** of micro rings to the natural hair.



**HAIR EXTENSION FUSION TOOL**

**Fusion Tool** can be used to easily attach pre-bonded hair extensions. Its aluminum plates heat up to 221 degrees.

### 4c Read and answer

Look at the following pictures and read the paragraph about micro ring weft hair extensions, and answer the questions.



micro ring wefts



**Micro Ring Wefts** combine both the micro ring attachment and a hair weft. The micro rings come attached to the weft, spaced out evenly along the top of the strip. Small sections of the natural hair are pulled through each micro ring, and then the micro ring is clamped flat to secure it in place. The number of wefts needed will depend on the thickness the client wants.

Adapted from <[http://www.thehairextensionboutique.co.uk/facts/other\\_application\\_techniques.php](http://www.thehairextensionboutique.co.uk/facts/other_application_techniques.php)>



1. What is the difference between a clip-in weft and a micro ring weft?
2. What tools are used in fitting micro ring wefts?
3. How do you apply it to your natural hair?
4. How do you secure the weft in the hair?
5. How many wefts does a client need?



## 4d Check the meaning

Read through the following three methods of hair extension. Use your glossary to check the meanings of the highlighted words.

### Clip-in hair extensions

Clip In Hair Extensions are made up of **hair wefts** that have clips **sewn** on to the top of the weft. These are the most temporary types of hair extensions. They can be applied and removed in a few minutes.

**Application:** Part the natural hair into **horizontal lines**, and **secure** the clips in place.



### Pre-bonded hair extensions

Pre-Bonded Hair Extensions are ready prepared strands of hair that come with **bonds** attached to the top of the hair extensions. Pre-bonded hair extensions create a **free-flowing** hair style. But most pre-bonded hair extensions are made from very strong **adhesives** that are difficult to remove without causing damage to the natural hair.

**Application:** Take a small section of the client's hair, and **melt** the bonds onto the natural hair using a hot fusion tool.



### Weaves/Sew In Hair Extensions

These are hair wefts without any **attachments**. **Weaves** usually feel very tight especially in the beginning and can be quite uncomfortable. They are not free flowing either.

**Application:** Braid the natural hair and then **saw** wefts of hair extensions onto it.



Adapted from <[http://www.thehairextensionboutique.co.uk/facts/other\\_application\\_techniques.php](http://www.thehairextensionboutique.co.uk/facts/other_application_techniques.php)>

## 4g Discuss

Discuss with your partner which of the four hair extension methods you prefer and why. Join the class discussion to find out what your classmates think.

## 4h Communicate

Work with your partner and write up a dialogue with a client. The client wants a hair extension but doesn't know what kind. Explain different kinds of extensions and their advantages and disadvantages and help the client make a decision. When you finish act the dialogue out.

## 4e True or False

Mark the following statements as True (T) or False (F) according to the text. If false, provide the correct information.

1. Clip-in hair extensions are hair wefts with clips on them. \_\_\_\_
2. It is difficult to remove clip-in extensions. \_\_\_\_
3. Pre-bonded hair extensions are bonded to the natural hair using heat. \_\_\_\_
4. Bonding can cause damage to the hair. \_\_\_\_
5. Pre-bonded hair extensions do not look natural. \_\_\_\_
6. You need pliers to bond the adhesives to the natural hair. \_\_\_\_
7. Weaves have micro rings attached to them. \_\_\_\_
8. You saw a weave onto braided natural hair. \_\_\_\_
9. The client can feel very uncomfortable when wearing a weave. \_\_\_\_

## 4f Answer the following questions

1. Which hair extension is the fastest to apply?
2. Which hair extension requires a heating tool for application?
3. What is the risk of using pre-bonded hair extensions?
4. How do you attach a weave onto the natural hair?
5. What is the disadvantage of wearing a weave?
6. Which type of hair extension has clips on it?
7. Which type of hair extension has

## Part 5 Eyebrow and Eyelash Treatments

### 5a Class Discussion

- ▶ What kind of treatments do people have for their eyebrows and eyelashes?
- ▶ Are you happy with your eyebrows and eyelashes? If you're not happy, how would you want to change them?



### 5b Match

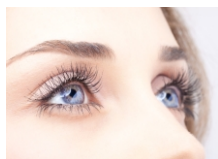
Match the following pictures with the names of the treatments:

- a) tweezing
- b) eyebrow tinting
- c) eyelash tinting
- d) threading
- e) eyelash perming
- f) eyebrow waxing



### Orchid Beauty Salon

#### Our Eyebrow and Eyelash Treatments



- ▶ Eyelash Tinting 30 minutes
- ▶ Eyebrow Tinting 15 minutes
- ▶ Eyebrow Shaping 15 minutes

#### Eyebrow Shaping (Tweeze, Thread or Wax)

Waxing is fast and effective but it can irritate your skin if it is sensitive. For sensitive skin we recommend threading which is a chemical free, painless method. You can also choose tweezing if you don't have thick eyebrows.

#### Eyebrow Tinting

If you have light or fair eyebrows or grays, tinting them with a slightly darker shade will make them look great. An eyebrow tint takes only a few minutes but will last for around 4 weeks.

#### Eyelash Tinting

Tinting eyelashes makes them darker. After an eyelash tint you will not need a mascara. Both your top and bottom lashes can be tinted and the eyelash tint will last for around 6 weeks.

#### Eyelash Perming

An Eyelash Perm is giving a semi-permanent, long-lasting curl, to normally naturally straight eye lashes. The result is that eyes look brighter and bigger and the lashes look fuller and longer. Unlike mascara, the eyelash perm will not wash away and you can expect results to last in the region of 6-8 weeks.

- ▶ Please note that all new clients must have a free tint test 24 hours before treatment.

### 5c Read and answer

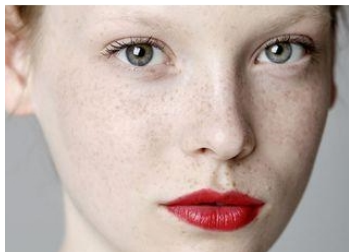
Read the flyer and answer the questions.

1. How long should a client's appointment be if she wants her eyebrows shaped and tinted?
2. Which eyebrow shaping method is better for someone with sensitive skin?
3. What is the disadvantage of waxing eyebrows?
4. Which clients would you recommend eyebrow tinting?
5. What is the advantage of eyelash tinting?
6. Which clients would you recommend eyelash perming?
7. How long can eyelash perming last?
8. What should clients do before tinting their eyebrows and eyelashes?

### 5d Recommend

Make recommendations for eyelash and eyebrow treatments.

1. Which eyebrow and eyelash treatments would you recommend to the following women? Why?
2. Which treatments can you recommend to some of your classmates? Why?



.....  
 .....  
 .....



.....  
 .....  
 .....



.....  
 .....  
 .....

### 5e Put in order

The following 2 texts talk about the procedures for eyebrow and eyelash tinting. The order is mixed. Put the steps in order. Then answer the questions.

**The eyebrow tinting procedure involves:**

- ▶ Apply a small amount of Vaseline around the eyebrows
- ▶ Client is then free to wear additional makeup, if she wants
- ▶ Carefully apply permanent tint to the eyebrows for 1 to 2 minutes
- ▶ Cleanse eyebrows of makeup with oil-free remover
- ▶ Remove tint and wipe the eyebrows with cosmetic pads and cleanser

**The eyelash tinting procedure involves:**

- ▶ Remove tint and wipe the eyes with cosmetic pads
- ▶ Apply a small amount of Vaseline to the upper and lower eyelids
- ▶ Client is then free to wear additional makeup if she wants
- ▶ Place a cosmetic pad to lower eyelid
- ▶ Carefully apply the tint to the lashes for 5 to 10 minutes
- ▶ Cleanse eyelashes of makeup with oil-free remover

1. Why do you think Vaseline is applied before tinting?
2. Why do you think oil-free remover is used?
3. Why do you think a cosmetic pad is placed on the lower lid before tinting eyelashes?
4. Can a client use make-up on the eyebrows and eyelashes after tinting?
5. What do you think will happen if the tint is left left on the eyebrows for longer than 2 minutes?

### 5f Communicate

Work with your partner to write up dialogues on the following scenarios. When you finish, act your dialogues out to whole class:

**Scenario 1:** A client calls to ask for an appointment for eyebrow shaping. She also asks how long it will take. Talk to her on the phone and give her an appointment.

**Scenario 2:** A client with messy eyebrows and short straight eyelashes comes in. You recommend her the appropriate treatments. She asks what the procedures involve and you explain.

## Part 6 Revision

### 6a Match

Match the two halves of the following sentences.

1. Foil is used
2. You should apply a thin layer of petroleum jelly
3. You can use hair colour remover wipes
4. Cover the client with a gown
5. Use a fusion tool
6. Use shade charts
7. You need a tinting bowl
8. Pliers are used to fasten
9. A client can fit
10. You need a pulling needle
11. Eyebrow tinting is recommended for
12. Eyelash perming is recommended for

- a) to remove colour staining from the client's skin.
- b) to bond the hair extension to the natural hair.
- c) women who have straight eyelashes.
- d) a clip-in hair weft herself.
- e) to mix the hair colour and the developer.
- f) micro rings securely to natural hair.
- g) those clients who have very light colour eyebrows.
- h) to protect her clothing from the hair dyes.
- i) to pull hair strands through micro rings.
- j) to discuss suitable hair colour for your clients.
- k) in the application of highlights and lowlights.
- l) to protect the client's skin from staining.

### 6b Translate to Turkish

1. dark gold blonde
2. light chocolate brown
3. copper blonde
4. midnight black
5. white ash blonde
6. medium brown
7. dark blonde



### 6c Translate to English

1. Kahverengi tonları cildinize uyar.
2. Siyah size uygun bir renk değil.
3. Ben size çikolata kahve rengini öneririm.
4. Saçınız çok koyu, size birkaç ton açık röfle öneririm.
5. Saçınızın rengi çok açık. Hadi saçınıza gölgeler yapalım.
6. Kaşlarınızı şekillendirmemi istermisiniz?
7. Saçlarınız çok ince. Saç uzatma istermisiniz?

### 6d Crossword Puzzle

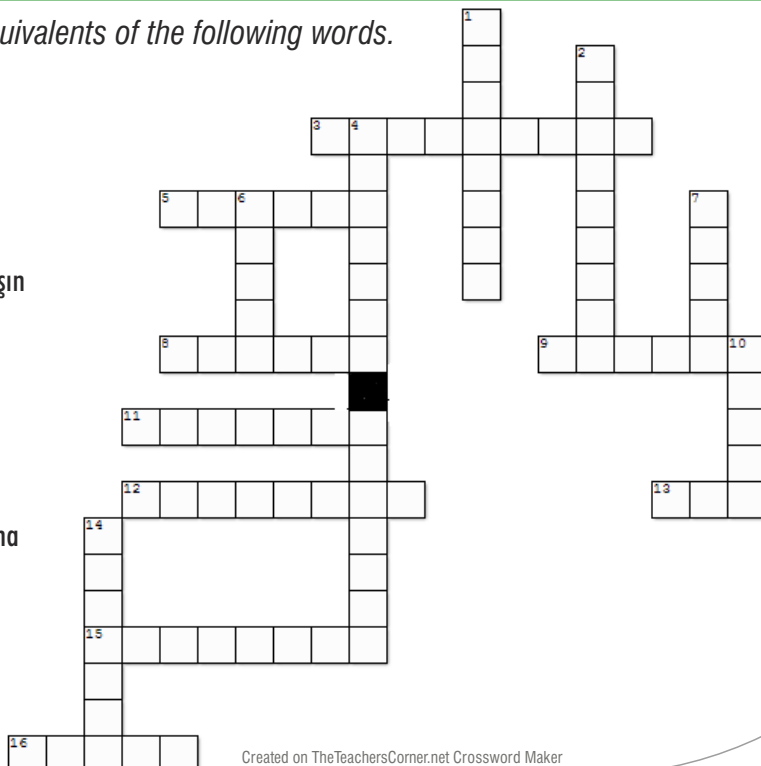
Complete the puzzle with the English equivalents of the following words.

#### Down

1. maun rengi
2. kalıcı
4. kirpik boyama
6. esmer ten
7. leke
10. derinlik
14. bölüm

#### Across

3. geçici
5. sarı saç / sarışın
8. renk açıcı
9. tutam
11. koruma
12. saç çizgisi
13. küllü
15. cımbızla alma
16. durulmak



Created on TheTeachersCorner.net Crossword Maker